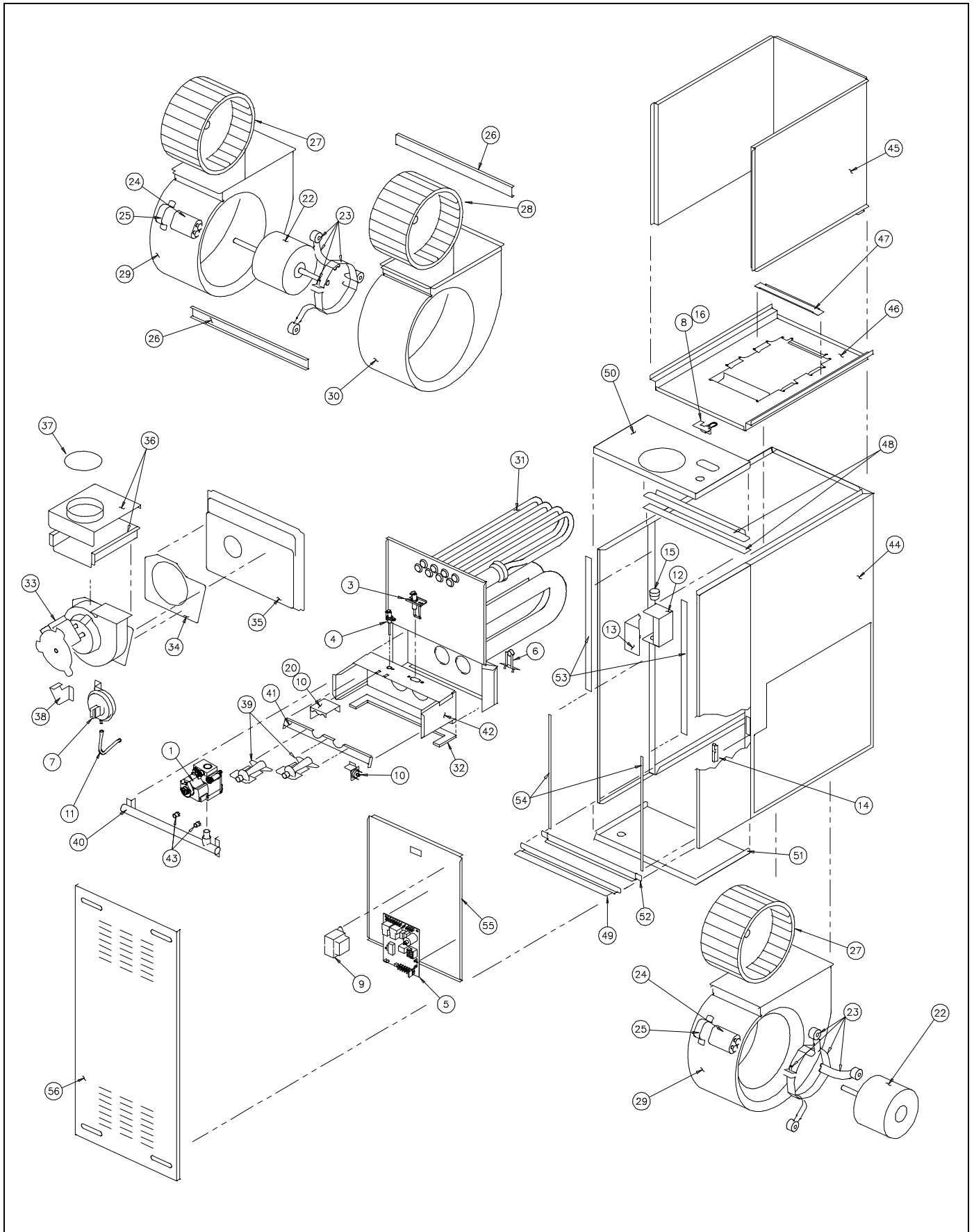


80% MULTI-POSITION FURNACE PARTS LIST AND SPECIFICATIONS



SPECIFICATIONS

HEATING OUTPUT / EFFICIENCY (Natural And Propane Gas)				BLOWER PERFORMANCE APPLICATION DATA											
Heating Input (Btu/Hr)	Heating Output (Btu/Hr)	AFUE Rating (%)	Calif. Seasonal Eff.	Motor Size (Horsepower)	Blower Size	Temp Rise (°F)	Motor FLA (Amps)	Motor Speed Tap	Cooling @ 0.5 in WC (Tons)	AIRFLOW* vs. STATIC PRESSURE					
										CFM)			inches W.C.)		
										.1	.2	.3	.4	.5	.6
40,000	32,500	80.2%	75.4%	1/4	10-4	50-80	4.0	HI	2.0	1000	950	900	850	805	730
								MH	1.5	890	845	800	760	710	640
								ML	1.0	715	675	635	605	550	-
								LO	-	475	435	390	-	-	-
40,000	32,500	80.2%	73.4%	1/3	10-6	30-60	6.5	HI	3.0	1500	1450	1380	1340	1265	1180
								MH	2.5	1200	1160	1130	1100	1040	980
								ML	2.0	920	905	875	850	810	770
								LO	1.5	705	690	670	640	615	560
60,000	48,800	80.2%	75.8%	1/4	10-4	45-75	4.0	HI	2.0	1040	1000	935	910	850	755
								MH	1.5	915	875	835	800	735	640
								ML	1.5	740	710	670	635	560	-
								LO	-	475	450	410	-	-	-
60,000	48,800	80.2%	75.1%	1/3	10-6	45-75	6.7	HI	3.0	1485	1435	1375	1340	1260	1170
								MH	2.5	1175	1160	1125	1070	1035	970
								ML	2.0	900	880	860	840	800	760
								LO	1.5	690	675	650	625	600	565
60,000	48,800	80.2%	72.0%	1/2	10-8	35-65	8.0	HI	4.0	1930	1870	1800	1705	1635	1560
								MH	3.5	1510	1505	1490	1440	1410	1355
								ML	3.0	1220	1230	1225	1220	1215	1175
								LO	2.5	910	930	980	1020	1025	1015
80,000	65,000	80.2%	75.9%	1/4	10-4	50-80	4.3	HI	2.0	1155	1105	1050	985	920	850
								MH	1.5	925	900	860	830	770	715
								ML	1.5	740	715	690	660	630	575
								LO	-	490	465	430	-	-	-
80,000	65,000	80.2%	74.8%	1/3	10-6	40-70	6.5	HI	3.0	1500	1445	1390	1320	1230	1150
								MH	2.5	1200	1170	1135	1095	1035	970
								ML	2.0	920	900	870	850	810	775
								LO	1.5	705	690	670	635	620	570
80,000	65,000	80.2%	73.7%	1/2	10-8	50-80	8.0	HI	4.0	1910	1840	1800	1720	1645	1560
								MH	3.5	1505	1495	1470	1445	1395	1345
								ML	3.0	1170	1200	1205	1200	1200	1150
								LO	2.5	890	920	950	965	990	985
80,000	65,000	80.2%	74.3%	3/4	Dual 10-4	40-70	9.2	HI	5.0	2305	2235	2140	2040	1930	1800
								MH	4.0	1630	1650	1630	1610	1560	1495
								ML	3.5	1315	1355	1385	1370	1365	1330
								LO	3.0	1000	1060	1110	1145	1155	1140
100,000	81,300	80.2%	75.7%	1/3	10-6	55-85	6.4	HI	3.0	1525	1475	1425	1340	1250	1165
								MH	2.5	1240	1220	1175	1130	1060	1000
								ML	2.0	965	955	935	900	860	800
								LO	1.5	750	735	720	690	650	620
100,000	81,300	80.2%	73.9%	1/2	10-8	50-80	8.0	HI	4.0	1875	1810	1735	1660	1580	1495
								MH	3.5	1530	1500	1470	1415	1380	1310
								ML	3.0	1200	1235	1230	1225	1205	1150
								LO	2.5	965	975	1005	1005	990	940
100,000	81,300	80.2%	74.7%	3/4	Dual 10-4	40-70	9.3	HI	5.0	2315	2245	2165	2050	1950	1850
								MH	4.0	1610	1650	1655	1615	1565	1535
								ML	3.5	1300	1360	1390	1400	1390	1335
								LO	3.0	965	1030	1075	1120	1135	1150
120,000	97,600	80.2%	74.7%	1/2	10-8	45-75	8.0	HI	4.0	1960	1910	1815	1735	1655	1550
								MH	3.5	1575	1575	1540	1475	1440	1355
								ML	3.0	1255	1275	1285	1265	1245	1200
								LO	2.5	975	1005	1045	1050	1040	1010
120,000	97,600	80.2%	75.1%	3/4	Dual 10-4	45-75	8.8	HI	5.0	2175	2100	2060	2035	1965	1850
								MH	4.0	1535	1525	1525	1580	1540	1475
								ML	3.0	1325	1305	1340	1340	1340	1300
								LO	2.5	995	1035	1070	1110	1110	1125
140,000	113,800	80.2%	75.4%	3/4	Dual 10-4	45-75	8.8	HI	4.5	2360	2250	2140	2020	1860	1725
								MH	4.0	1765	1765	1735	1675	1585	1490
								ML	3.5	1325	1375	1400	1400	1375	1300
								LO	2.5	975	1035	1080	1080	1080	1080
140,000	113,800	80.2%	75.6%	3/4	Dual 10-6	50-80	9.4	HI	5.5	2445	2400	2390	2360	2235	2100
								MH	4.0	1725	1750	1765	1750	1715	1650
								ML	3.5	1375	1415	1440	1440	1440	1410
								LO	3.0	1110	1150	1190	1210	1200	1190

* Airflow ratings are with high-velocity washable air filters in place. Air filters are not supplied with the furnace.

Note: Specifications are subject to change without notice.